



**Electrical and Mechanical Lugs**

Lug Overview and Numbering System	B2-B3
Stud Size and Conversion Charts	B4
<b>Crimp or Solder Electrical Lugs</b>	
8 AWG to 1/0 AWG	B5-B7
2/0 AWG to 250 MCM	B8-B10
Industrial Lugs	B11-B12
Industrial Butt Connectors	B12
<b>Compression Lugs</b>	
Standard Barrel, One Hole	B13
Standard Barrel, Two Holes	B14
Long Barrel, One Hole	B15
Long Barrel, Two Holes	B16
Copper Connectors	B17-B19
<b>Solderless Lugs</b>	
Overview	B20
Copper Solderless Lugs	B20
Aluminum Solderless Lugs	B21
<b>Neutral Bars</b>	
Neutral Bar Overview	B22
Neutral Bar	B22

**ETLIN-DANIELS** reserves the right to discontinue, modify designs and change specifications without incurring obligation. While every effort is made to ensure that descriptions, specifications and other information in this catalogue are correct, no warranty is given in respect thereof and the company shall not be liable for any error herein.  
Copyright © 2013 **ETLIN-DANIELS**.

## LUG OVERVIEW & NUMBERING SYSTEM

B2

These heavy duty ring type lugs are made from high grade electrolytic copper, ETP CDA 110, ASTM-b-152 copper. They are available in cable sizes from #8 AWG to 500 MCM and in a wide range of mounting holes. They are tin plated for resistance to corrosion. The terminals are CSA and UL listed using our tooling and other popular tools, such as T&B and Burndy.

### Plain Type

A general purpose seamless electrical terminal used where special installation characteristics are not required. Available in various pad widths to accommodate most stud sizes.



### With Sight Hole

Has the same characteristics as the general purpose terminal and permits inspection of cable insertion depth and solder flow. The new type sight hole does not create a weak spot under severe vibration.



### Connectors

Seamless connectors in wire size from #8 through 4/0 AWG. Available in flared or chamfered barrels.



10383-10-90



8 - 8  
6 - 6  
4 - 4  
2 - 2  
1 - 1  
10- 1/0  
20- 2/0  
30- 3/0  
40- 4/0

10- #10  
14- 1/4"  
56- 5/16"  
38- 3/8"  
12- 1/2"  
00- BLANK

1 - NARROW  
2 - MEDIUM  
3 - WIDE

1 - PLATED  
3 - RING WITH SIGHT HOLE  
9 - BENT RING PLATED  
10- BENT RING PLATED  
INDICATE THE ANGLE  
11- BENT WITH SIGHT HOLE  
PLATED, INDICATE THE ANGLE  
20- CONNECTOR CHAMFERED  
PLATED

### Ordering Bent Lugs

To order Bent Type Lugs, remove suffix and add the suffix "-11-ANGLE". For example: 8562-3 would become 8562-11-45 for a lug bent at 45°.

## LUG NUMBERING SYSTEM & STUD SIZE CHART

B3

Lugs

### WHEN A PART NUMBER HAS FOUR DIGITS (NOT COUNTING THE SUFFIX)

The first number is the wire size, ie:

4 = 4 AWG

### THE SECOND AND THIRD NUMBERS ARE THE STUD SIZE, IE:

438 = 4 AWG -  $\frac{3}{8}$  STUD

### THE FOURTH NUMBER INDICATES THE PAD WIDTH, IE:

4381 = 4 AWG -  $\frac{3}{8}$  STUD - 1 SMALLEST WIDTH

In some wire ranges, such as #4, there are three pad widths.  
Widths are listed under different wire ranges.

### WHEN A NUMBER HAS FIVE DIGITS (NOT COUNTING THE SUFFIX)

The first two numbers are the wire size, ie:

10381 IS A 1/0 AWG -  $\frac{3}{8}$  STUD - 1 SMALLEST PATTERN

### A SIX DIGIT NUMBER IS USED TO COVER THE MCM SIZES, IE:

250381 IS A 250 MCM -  $\frac{3}{8}$  STUD - 1 SMALLEST PATTERN

WIRE SIZE	STUD SIZE	PAD WIDTH
4	38	2

SUFFIX CODE	DESCRIPTION
NONE	RING - UNPLATED
1	RING - PLATED
2	RING WITH SIGHT HOLE - UNPLATED
3	RING WITH SIGHT HOLE - PLATED
20	CONNECTORS CAMFERED - PLATED
25	CONNECTORS FLARED - PLATED - COLOUR CODED
25	CONNECTORS FLARED - PLATED
60	RING WITH SIGHT HOLE - PLATED - COLOUR CODED

# WIRE GAUGE CONVERSION CHARTS

B4

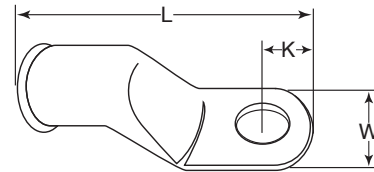
## WIRE GAUGE CONVERSION

AMERICAN WIRE GAUGE	DIAMETER (IN)	CIRC. MIL AREA	AMERICAN WIRE GAUGE	DIAMETER (IN)	CIRC. MIL AREA	AMERICAN WIRE GAUGE	DIAMETER (IN)	CIRC. MIL AREA
4/0	0.460	211,600	12	0.081	6,530	27	0.0142	202
3/0	0.410	168,000	13	0.072	5,180	28	0.0126	160
2/0	0.365	133,000	14	0.064	4,110	29	0.0113	127
1/0	0.325	106,000	15	0.057	3,260	30	0.0100	100
1	0.289	83,700	16	0.051	2,580	31	0.0089	79.7
2	0.258	66,400	17	0.045	2,050	32	0.0080	63.2
3	0.229	52,600	18	0.040	1,620	33	0.0071	50.1
4	0.204	41,700	19	0.036	1,290	34	0.0063	39.8
5	0.182	33,100	20	0.032	1,020	35	0.0056	31.5
6	0.162	26,300	21	0.0285	810	36	0.0050	25.0
7	0.144	20,820	22	0.0253	640	37	0.0045	20.2
8	0.128	16,500	23	0.0226	509	38	0.0040	15.7
9	0.114	13,100	24	0.0201	404	39	0.0035	12.5
10	0.102	10,400	25	0.0179	320	40	0.0031	9.9
11	0.091	8,230	26	0.0159	254	41	0.0028	7.8

STUD SIZE	DIAMETER	DIAMETER
● #0	.060	
● #1	.073	.094
● #2	.086	
● #3	.099	.120
● #4	.112	
● #5	.125	.143
● #6	.138	
● #8	.164	.174
● #10	.190	.196
● #12	.216	
● #14	.242	.265
● 1/4	.250	
● 5/16	.312	.328
● 3/8	.375	.390
● 7/16	.437	.453

STUD SIZE	DIAMETER	DIAMETER
● 1/2	.500	.515
● 5/8	.625	.656
● 3/4	.750	.781
● 7/8	.875	.906
● 1	1.000	1.031

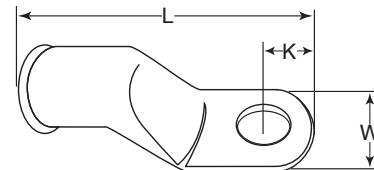
## CRIMP OR SOLDER TYPE HEAVY DUTY ELECTRICAL TUBULAR LUGS



B5

### 8 AWG HEAVY DUTY ELECTRICAL TUBULAR LUGS, FLARED ENDS, BARREL ID .185

PART NUMBER				STUD SIZE	L	W	K
COPPER		TIN PLATED					
PLAIN	W/ SIGHT HOLE	PLAIN	W/ SIGHT HOLE				
8101	8101-2	8101-1	8101-3	10	1-3/16	7/16	15/64
8141	8141-2	8141-1	8141-3	1/4	1-3/16	7/16	15/64
8561	8561-2	8561-1	8561-3	5/16	1-3/16	7/16	15/64
8142	8142-2	8142-1	8142-3	1/4	1-5/16	19/32	5/16
8562	8562-2	8562-1	8562-3	5/16	1-5/16	19/32	5/16
8382	8382-2	8382-1	8382-3	3/8	1-5/16	19/32	5/16
8383	8383-2	8383-1	8383-3	3/8	1-15/16	49/64	13/32
8503	8503-2	8503-1	8503-3	1/2	1-15/16	49/64	13/32
BUTT CONNECTOR - FLARED ENDS							
--	--	8001	--	--	31/32	--	--
BUTT CONNECTOR - CHAMFERED ENDS							
--	--	8001-20	--	--	31/32	--	--

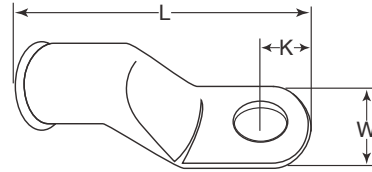


### 6 AWG HEAVY DUTY ELECTRICAL TUBULAR LUGS, FLARED ENDS, BARREL ID .232

PART NUMBER				STUD SIZE	L	W	K
COPPER		TIN PLATED					
PLAIN	W/ SIGHT HOLE	PLAIN	W/ SIGHT HOLE				
6101	6101-2	6101-1	6101-3	10	1-9/16	7/16	15/64
6141	6141-2	6141-1	6141-3	1/4	1-9/16	7/16	15/64
6561	6561-2	6561-1	6561-3	5/16	1-9/16	7/16	15/64
6142	6142-2	6142-1	6142-3	1/4	1-13/32	19/32	5/16
6562	6562-2	6562-1	6562-3	5/16	1-13/32	19/32	5/16
6382	6382-2	6382-1	6382-3	3/8	1-13/32	19/32	5/16
6383	6383-2	6383-1	6383-3	3/8	1-9/16	49/64	13/32
6503	6503-2	6503-1	6503-3	1/2	1-9/16	49/64	13/32
BUTT CONNECTOR - FLARED ENDS							
--	--	6001	--	--	1-1/16	--	--
BUTT CONNECTOR - CHAMFERED ENDS							
--	--	6001-20	--	--	1-1/16	--	--

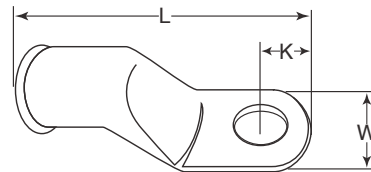
## CRIMP OR SOLDER TYPE HEAVY DUTY ELECTRICAL TUBULAR LUGS

B6



### 4 AWG HEAVY DUTY ELECTRICAL TUBULAR LUGS, FLARED ENDS, BARREL ID .286

PART NUMBER				STUD SIZE	L	W	K
COPPER		TIN PLATED					
PLAIN	W/ SIGHT HOLE	PLAIN	W/ SIGHT HOLE				
4101	4101-2	4101-1	4101-3	10	1-1/2	17/32	9/32
4141	4141-2	4141-1	4141-3	1/4	1-1/2	17/32	9/32
4561	4561-2	4561-1	4561-3	5/16	1-1/2	17/32	9/32
4142	4142-2	4142-1	4142-3	1/4	1-1/2	17/32	9/32
4562	4562-2	4562-1	4562-3	5/16	1-17/32	5/8	5/16
4382	4382-2	4382-1	4382-3	3/8	1-17/32	5/8	5/16
4383	4383-2	4383-1	4383-3	3/8	1-11/16	49/64	13/32
4503	4503-2	4503-1	4503-3	1/2	1-11/16	49/64	13/32
BUTT CONNECTOR - FLARED ENDS							
--	--	4001	--	--	1-7/32	--	--
BUTT CONNECTOR - CHAMFERED ENDS							
--	--	4001-20	--	--	1-7/32	--	--



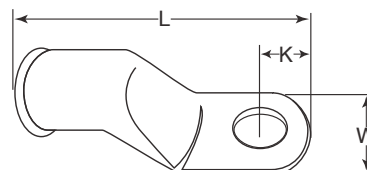
### 2 AWG HEAVY DUTY ELECTRICAL TUBULAR LUGS, FLARED ENDS, BARREL ID .336

PART NUMBER				STUD SIZE	L	W	K
COPPER		TIN PLATED					
PLAIN	W/ SIGHT HOLE	PLAIN	W/ SIGHT HOLE				
2141	2141-2	2141-1	2141-3	1/4	1-5/8	5/8	5/16
2561	2561-2	2561-1	2561-3	5/16	1-5/8	5/8	5/16
2381	2381-2	2381-1	2381-3	3/8	1-5/8	5/8	5/16
2383	2383-2	2383-1	2383-3	3/8	1-3/4	3/4	13/32
2503	2503-2	2503-1	2503-3	1/2	1-3/4	3/4	13/32
BUTT CONNECTOR - FLARED ENDS							
--	--	2001	--	--	1-11/32	--	--
BUTT CONNECTOR - CHAMFERED ENDS							
--	--	2001-20	--	--	1-11/32	--	--

## CRIMP OR SOLDER TYPE HEAVY DUTY ELECTRICAL TUBULAR LUGS

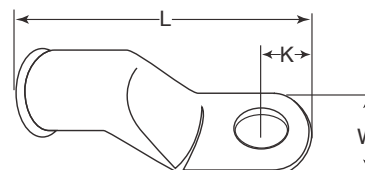
B7

Lugs



### 1 AWG HEAVY DUTY ELECTRICAL TUBULAR LUGS, FLARED ENDS, BARREL ID .360

PART NUMBER				STUD SIZE	L	W	K
COPPER		TIN PLATED					
PLAIN	W/ SIGHT HOLE	PLAIN	W/ SIGHT HOLE				
1141	1141-2	1141-1	1141-3	1/4	1-23/32	21/32	11/32
1561	1561-2	1561-1	1561-3	5/16	1-23/32	21/32	11/32
1381	1381-2	1381-1	1381-3	3/8	1-23/32	21/32	11/32
1501	1501-2	1501-1	1501-3	1/2	1-23/32	21/32	11/32
1383	1383-2	1383-1	1383-3	3/8	1-27/32	3/4	13/32
1503	1503-2	1503-1	1503-3	1/2	1-27/32	3/4	13/32
BUTT CONNECTOR - FLARED ENDS							
--	--	1001	--	--	1-11/32	--	--
BUTT CONNECTOR - CHAMFERED ENDS							
--	--	1001-20	--	--	1-11/32	--	--

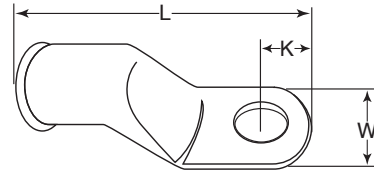


### 1/0 AWG HEAVY DUTY ELECTRICAL TUBULAR LUGS, FLARED ENDS, BARREL ID .407

PART NUMBER				STUD SIZE	L	W	K
COPPER		TIN PLATED					
PLAIN	W/ SIGHT HOLE	PLAIN	W/ SIGHT HOLE				
10141	10141-2	10141-1	10141-3	1/4	1-27/32	23/32	3/8
10561	10561-2	10561-1	10561-3	5/16	1-27/32	23/32	3/8
10381	10381-2	10381-1	10381-3	3/8	1-27/32	23/32	3/8
10501	10501-2	10501-1	10501-3	1/2	1-27/32	23/32	3/8
10383	10383-2	10383-1	10383-3	3/8	1-29/32	13/16	7/16
10503	10503-2	10503-1	10503-3	1/2	1-29/32	13/16	7/16
BUTT CONNECTOR - FLARED ENDS							
--	--	10001	--	--	1-9/16	--	--
BUTT CONNECTOR - CHAMFERED ENDS							
--	--	10001-20	--	--	1-9/16	--	--

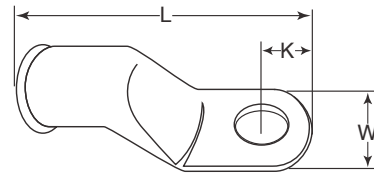
## CRIMP OR SOLDER TYPE HEAVY DUTY ELECTRICAL TUBULAR LUGS

B8



### 2/0 AWG HEAVY DUTY ELECTRICAL TUBULAR LUGS, FLARED ENDS, BARREL ID .461

PART NUMBER				STUD SIZE	L	W	K
COPPER		TIN PLATED					
PLAIN	W/ SIGHT HOLE	PLAIN	W/ SIGHT HOLE				
20141	20141-2	20141-1	20141-3	1/4	2-1/16	13/16	7/16
20561	20561-2	20561-1	20561-3	5/16	2-1/16	13/16	7/16
20381	20381-2	20381-1	20381-3	3/8	2-1/16	13/16	7/16
20501	20501-2	20501-1	20501-3	1/2	2-1/16	13/16	7/16
BUTT CONNECTOR - FLARED ENDS							
--	--	20001	--	--	1-13/16	--	--
BUTT CONNECTOR - CHAMFERED ENDS							
--	--	20001-20	--	--	1-13/16	--	--



### 3/0 AWG HEAVY DUTY ELECTRICAL TUBULAR LUGS, FLARED ENDS, BARREL ID .511

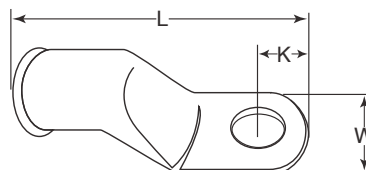
PART NUMBER				STUD SIZE	L	W	K
COPPER		TIN PLATED					
PLAIN	W/ SIGHT HOLE	PLAIN	W/ SIGHT HOLE				
30141	30141-2	30141-1	30141-3	1/4	2-5/32	29/32	15/32
30561	30561-2	30561-1	30561-3	5/16	2-5/32	29/32	15/32
30381	30381-2	30381-1	30381-3	3/8	2-5/32	29/32	15/32
30501	30501-2	30501-1	30501-3	1/2	2-5/32	29/32	15/32
BUTT CONNECTOR - FLARED ENDS							
--	--	30001	--	--	1-29/32	--	--
BUTT CONNECTOR - CHAMFERED ENDS							
--	--	30001-20	--	--	1-29/32	--	--



**CRIMP OR SOLDER TYPE  
HEAVY DUTY ELECTRICAL TUBULAR LUGS**

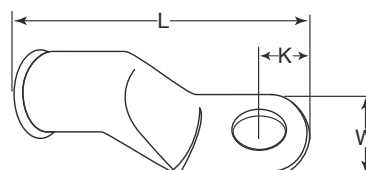
B9

Lugs



**4/0 AWG HEAVY DUTY ELECTRICAL TUBULAR LUGS, FLARED ENDS, BARREL ID .559**

PART NUMBER				STUD SIZE	L	W	K
COPPER		TIN PLATED					
PLAIN	W/ SIGHT HOLE	PLAIN	W/ SIGHT HOLE				
40141	40141-2	40141-1	40141-3	1/4	2-11/32	63/64	1/2
40561	40561-2	40561-1	40561-3	5/16	2-11/32	63/64	1/2
40381	40381-2	40381-1	40381-3	3/8	2-11/32	63/64	1/2
40501	40501-2	40501-1	40501-3	1/2	2-11/32	63/64	1/2
BUTT CONNECTOR - FLARED ENDS							
--	--	40000	--	--	2.000	--	--
BUTT CONNECTOR - CHAMFERED ENDS							
--	--	40000-20	--	--	2.000	--	--

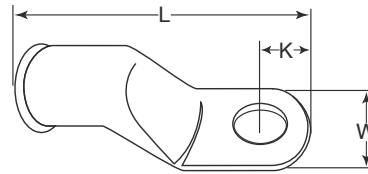


**4/0 AWG HEAVY DUTY ELECTRICAL TUBULAR LUGS, FLARED ENDS, BARREL ID .590**

PART NUMBER				STUD SIZE	L	W	K
COPPER		TIN PLATED					
PLAIN	W/ SIGHT HOLE	PLAIN	W/ SIGHT HOLE				
40382	40382-2	40382-1	40382-3	3/8	2-25/64	1-1/32	17/32
40502	40502-2	40502-1	40502-3	1/2	2-25/64	1-1/32	17/32
40582	40582-2	40582-1	40582-3	5/8	2-25/64	1-1/32	17/32
BUTT CONNECTOR - FLARED ENDS							
--	--	40001	--	--	2.000	--	--
BUTT CONNECTOR - CHAMFERED ENDS							
--	--	40001-20	--	--	2.000	--	--

**CRIMP OR SOLDER TYPE  
HEAVY DUTY ELECTRICAL TUBULAR LUGS**

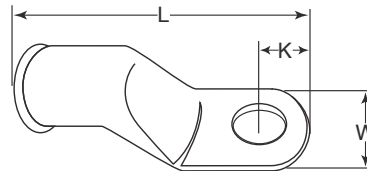
B10



**4/0 AWG HEAVY DUTY ELECTRICAL TUBULAR LUGS, FLARED ENDS, BARREL ID .625**

PART NUMBER				STUD SIZE	L	W	K
COPPER		TIN PLATED					
PLAIN	W/ SIGHT HOLE	PLAIN	W/ SIGHT HOLE				
40383	40383-2	40383-1	40383-3	3/8	2-15/32	1-3/32	9/16
40503	40503-2	40503-1	40503-3	1/2	2-15/32	1-3/32	9/16
40583	40583-2	40583-1	40583-3	5/8	2-15/32	1-3/32	9/16
BUTT CONNECTOR - FLARED ENDS							
--	--	40002	--	--	2.000	--	--
BUTT CONNECTOR - CHAMFERED ENDS							
--	--	40002-20	--	--	2.000	--	--

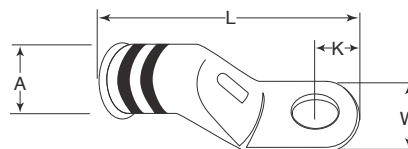
Lugs



**250 MCM HEAVY DUTY ELECTRICAL TUBULAR LUGS, FLARED ENDS, BARREL ID .685**

PART NUMBER				STUD SIZE	L	W	K
COPPER		TIN PLATED					
PLAIN	W/ SIGHT HOLE	PLAIN	W/ SIGHT HOLE				
250381	250381-2	250381-1	250381-3	3/8	2-21/32	1-13/64	19/32
250501	250501-2	250501-1	250501-3	1/2	2-21/32	1-13/64	19/32
250581	250581-2	250581-1	250581-3	5/8	2-21/32	1-13/64	19/32

**CRIMP OR SOLDER TYPE  
HEAVY DUTY ELECTRICAL TUBULAR LUGS**



B11

**INDUSTRIAL ELECTRICAL TUBULAR LUGS, ETP COPPER, CDA-110, 600V  
COLOUR CODED, TIN PLATED, SIGHT HOLED, FLARED ENDS, ROUNDED TONGUE**

Lugs

PART NUMBER	AWG	STUD SIZE	COLOUR CODE	A	L	W	K
8101-60	8	10	RED	.185	1-3/16	7/16	15/64
8141-60	8	1/4	RED	.185	1-3/16	7/16	15/64
8142-60	8	1/4	RED	.185	1-5/16	19/32	5/16
8562-60	8	5/16	RED	.185	1-5/16	19/32	5/16
8382-60	8	3/8	RED	.185	1-5/16	19/32	5/16
8383-60	8	3/8	RED	.185	1-15/32	49/64	13/32
8503-60	8	1/2	RED	.185	1-15/32	49/64	13/32
6101-60	6	10	BLUE	.232	1-9/32	7/16	15/64
6141-60	6	1/4	BLUE	.232	1-9/32	7/16	15/64
6142-60	6	1/4	BLUE	.232	1-13/32	19/32	5/16
6562-60	6	5/16	BLUE	.232	1-13/32	19/32	5/16
6382-60	6	3/8	BLUE	.232	1-13/32	19/32	5/16
6383-60	6	3/8	BLUE	.232	1-9/16	49/64	13/32
6503-60	6	1/2	BLUE	.232	1-9/16	49/64	13/32
4101-60	4	10	GREY	.286	1-1/2	17/32	9/32
4141-60	4	1/4	GREY	.286	1-1/2	17/32	9/32
4562-60	4	5/16	GREY	.286	1-17/32	5/8	5/16
4382-60	4	3/8	GREY	.286	1-17/32	5/8	5/16
4383-60	4	3/8	GREY	.286	1-11/16	49/64	13/32
4503-60	4	1/2	GREY	.286	1-11/16	49/64	13/32
2141-60	2	1/4	BROWN	.336	1-5/8	5/8	5/16
2561-60	2	5/16	BROWN	.336	1-5/8	5/8	5/16
2381-60	2	3/8	BROWN	.336	1-5/8	5/8	5/16
2383-60	2	3/8	BROWN	.336	1-3/4	3/4	13/32
2503-60	2	1/2	BROWN	.336	1-3/4	3/4	13/32
1141-60	1	1/4	GREEN	.360	1-23/32	21/32	11/32
1561-60	1	5/16	GREEN	.360	1-23/32	21/32	11/32
1381-60	1	3/8	GREEN	.360	1-23/32	21/32	11/32
1383-60	1	3/8	GREEN	.360	1-27/32	3/4	13/32
1503-60	1	1/2	GREEN	.360	1-27/32	3/4	13/32

Electrical Lugs are made from ETP Copper (Electrolytic Tough Pitch) for 100% conductivity. They are colour coded to identify correct dies on crimping tools.

**CRIMP OR SOLDER TYPE  
HEAVY DUTY ELECTRICAL TUBULAR LUGS**

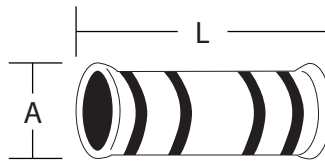
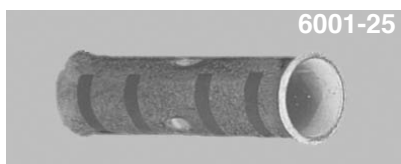
B12

INDUSTRIAL ELECTRICAL TUBULAR LUGS, ETP COPPER, CDA-110, 600V  
COLOUR CODED, TIN PLATED, SIGHT HOLED, FLARED ENDS (cont'd)

Lugs

PART NUMBER	AWG	STUD SIZE	COLOUR CODE	A	L	W	K
10141-60	1/0	1/4	PINK	.407	1-27/32	23/32	3/8
10561-60	1/0	5/16	PINK	.407	1-27/32	23/32	3/8
10381-60	1/0	3/8	PINK	.407	1-27/32	23/32	3/8
10501-60	1/0	1/2	PINK	.407	1-27/32	23/32	3/8
10383-60	1/0	3/8	PINK	.407	1-29/32	13/16	7/16
10503-60	1/0	1/2	PINK	.407	1-29/32	13/16	7/16
20141-60	2/0	1/4	BLACK	.461	2-1/16	13/16	7/16
20561-60	2/0	5/16	BLACK	.461	2-1/16	13/16	7/16
20381-60	2/0	3/8	BLACK	.461	2-1/16	13/16	7/16
20501-60	2/0	1/2	BLACK	.461	2-1/16	13/16	7/16
30141-60	3/0	1/4	ORANGE	.511	2-5/32	29/32	15/32
30561-60	3/0	5/16	ORANGE	.511	2-5/32	29/32	15/32
30381-60	3/0	3/8	ORANGE	.511	2-5/32	29/32	15/32
30501-60	3/0	1/2	ORANGE	.511	2-5/32	29/32	15/32
40141-60	4/0	1/4	PURPLE	.559	2-11/32	63/64	1/2
40561-60	4/0	5/16	PURPLE	.559	2-11/32	63/64	1/2
40381-60	4/0	3/8	PURPLE	.559	2-11/32	63/64	1/2
40501-60	4/0	1/2	PURPLE	.559	2-11/32	63/64	1/2

**BUTT CONNECTORS FOR INDUSTRIAL LUGS**

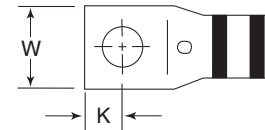
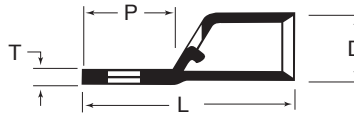


PART NUMBER	AWG	COLOUR CODE	ID A	L
8001-25	8	RED	.185	31/32
6001-25	6	BLUE	.232	1-1/16
4001-25	4	GREY	.286	1-7/32
2001-25	2	BROWN	.336	1-11/32
1001-25	1	GREEN	.360	1-11/32
10001-25	1/0	PINK	.407	1-9/16
20001-25	2/0	BLACK	.461	1-13/16
30001-25	3/0	ORANGE	.511	1-29/32
40001-25	4/0	PURPLE	.559	2

## COMPRESSION LUGS



8107



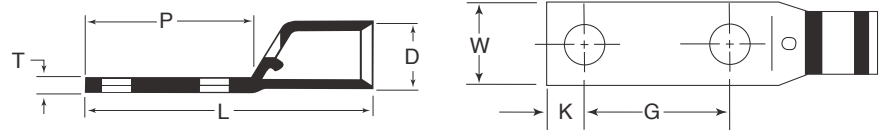
B13

### COPPER COMPRESSION LUGS, STANDARD BARREL, ONE HOLE, 600V, WITH SIGHT HOLE, SQUARED OFF TONGE

PART NUMBER	AWG	STUD SIZE	COLOUR CODE	DIMENSIONS IN INCHES					
				L	W	P	K	D	T
8107	8	10	RED	1-5/16	11/32	9/16	1/4	1/4	5/64
8147	8	1/4	RED	1-5/16	15/32	9/16	1/4	17/64	5/64
6107	6	10	BLUE	1-15/64	13/32	19/32	1/4	9/32	5/64
6147	6	1/4	BLUE	1-15/64	13/32	19/32	1/4	9/32	5/64
6567	6	5/16	BLUE	1-15/64	17/32	19/32	1/4	5/16	3/32
4107	4	10	GREY	1-13/32	1/2	45/64	19/64	23/64	7/64
4147	4	1/4	GREY	1-13/32	1/2	45/64	19/64	23/64	7/64
4567	4	5/16	GREY	1-13/32	1/2	45/64	19/64	23/64	7/64
4387	4	3/8	GREY	1-13/32	41/64	45/64	19/64	3/8	7/64
2147	2	1/4	BROWN	1-19/32	39/64	13/16	11/32	7/16	1/8
2567	2	5/16	BROWN	1-19/32	39/64	13/16	11/32	7/16	1/8
2387	2	3/8	BROWN	1-19/32	39/64	13/16	11/32	7/16	1/8
1147	1	1/4	GREEN	1-27/32	11/16	31/32	13/32	31/64	9/64
1567	1	5/16	GREEN	1-27/32	11/16	31/32	13/32	31/64	9/64
1387	1	3/8	GREEN	1-27/32	11/16	31/32	13/32	31/64	9/64
1507	1	1/2	GREEN	1-27/32	11/16	31/32	13/32	31/64	9/64
10147	1/0	1/4	PINK	2-1/64	49/64	1	29/64	17/32	9/64
10567	1/0	5/16	PINK	2-1/64	49/64	1	29/64	17/32	9/64
10387	1/0	3/8	PINK	2-1/64	49/64	1	29/64	17/32	9/64
10507	1/0	1/2	PINK	2-1/64	49/64	1	29/64	17/32	9/64
20147	2/0	1/4	BLACK	2-1/8	53/64	1	29/64	37/64	9/64
20567	2/0	5/16	BLACK	2-1/8	53/64	1	29/64	37/64	9/64
20387	2/0	3/8	BLACK	2-1/8	53/64	1	29/64	37/64	9/64
20507	2/0	1/2	BLACK	2-1/8	53/64	1	29/64	37/64	9/64
30147	3/0	1/4	ORANGE	2-1/4	29/32	1	29/64	5/8	9/64
30567	3/0	5/16	ORANGE	2-1/4	29/32	1	29/64	5/8	9/64
30387	3/0	3/8	ORANGE	2-1/4	29/32	1	29/64	5/8	9/64
30507	3/0	1/2	ORANGE	2-1/4	29/32	1	29/64	5/8	9/64
40147	4/0	1/4	PURPLE	2-11/32	11/64	1	29/64	45/64	5/32
40567	4/0	5/16	PURPLE	2-11/32	11/64	1	29/64	45/64	5/32
40387	4/0	3/8	PURPLE	2-11/32	11/64	1	29/64	45/64	5/32
40507	4/0	1/2	PURPLE	2-11/32	11/64	1	29/64	45/64	5/32
250567	250 MCM	5/16	YELLOW	2-5/8	19/64	1-5/32	1/2	25/32	3/16
250387	250 MCM	3/8	YELLOW	2-5/8	19/64	1-5/32	1/2	25/32	3/16
250507	250 MCM	1/2	YELLOW	2-5/8	19/64	1-5/32	1/2	25/32	3/16
250587	250 MCM	5/8	YELLOW	2-5/8	19/64	1-5/32	1/2	25/32	3/16
300387	300 MCM	3/8	WHITE	2-13/16	17/32	1-7/32	9/16	27/32	3/16
300507	300 MCM	1/2	WHITE	2-13/16	17/32	1-7/32	9/16	27/32	3/16
300587	300 MCM	5/8	WHITE	2-13/16	17/32	1-7/32	9/16	27/32	3/16
350387	350 MCM	3/8	RED	3	15/16	1-1/4	9/16	29/32	13/64
350507	350 MCM	1/2	RED	3	15/16	1-1/4	9/16	29/32	13/64
350587	350 MCM	5/8	RED	3	15/16	1-1/4	9/16	29/32	13/64
400387	400 MCM	3/8	BLUE	3-3/32	1-13/32	1-9/32	9/16	31/32	7/32
400507	400 MCM	1/2	BLUE	3-3/32	1-13/32	1-9/32	9/16	31/32	7/32
400587	400 MCM	5/8	BLUE	3-3/32	1-13/32	1-9/32	9/16	31/32	7/32
500387	500 MCM	3/8	BROWN	3-11/32	1-37/64	1-5/16	9/16	1-3/32	1/4
500507	500 MCM	1/2	BROWN	3-11/32	1-37/64	1-5/16	9/16	1-3/32	1/4
500587	500 MCM	5/8	BROWN	3-11/32	1-37/64	1-5/16	9/16	1-3/32	1/4

High conductivity wrought copper, electro tin plate to minimize corrosion. Colour code designates cable size and tool setting die. Chamfered ends provide easy cable insertion.

B14



### COPPER COMPRESSION LUGS, STANDARD BARREL, TWO HOLES, 600V, WITH SIGHT HOLE, SQUARED OFF TONGE

Lugs

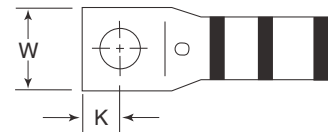
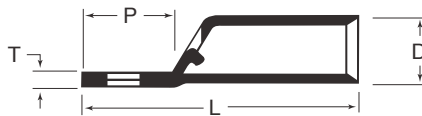
PART NUMBER	AWG	STUD SIZE	COLOUR CODE	DIMENSIONS IN INCHES						
				L	W	P	K	D	T	G
2-8107	8	10	RED	1-3/4	11/32	1-5/32	1/4	1/4	5/64	5/8
2-6147	6	1/4	BLUE	1-29/32	13/32	1-9/32	1/4	9/32	5/64	5/8
2-4147	4	1/4	GREY	2	1/2	1-9/32	5/16	23/64	7/64	5/8
2-4567	4	5/16	GREY	2	1/2	1-9/32	5/16	23/64	7/64	5/8
2-2147	2	1/4	BROWN	2-3/32	39/64	1-5/16	5/16	7/16	1/8	5/8
2-2567	2	5/16	BROWN	2-7/32	39/64	1-7/16	5/16	7/16	1/8	3/4
2-1147	1	1/4	GREEN	2-1/4	11/16	1-11/32	5/16	31/64	9/64	5/8
2-1567	1	5/16	GREEN	2-3/8	11/16	1-15/32	5/16	31/64	9/64	3/4
2-10567	1/0	5/16	PINK	2-11/16	49/64	1-11/32	11/32	17/32	9/64	7/8
2-10387	1/0	3/8	PINK	2-29/32	49/64	1-29/32	13/32	17/32	9/64	1
2-20567	2/0	5/16	BLACK	2-29/32	53/64	1-25/32	11/32	37/64	9/64	1
2-20387	2/0	3/8	BLACK	2-29/32	53/64	1-25/32	11/32	37/64	9/64	1
2-20507	2/0	1/2	BLACK	3-13/16	53/64	2-11/16	29/64	37/64	9/64	1-3/4
2-30567	3/0	5/16	ORANGE	3-7/32	29/32	1-31/32	29/64	5/8	9/64	1
2-30387	3/0	3/8	ORANGE	3-7/32	29/32	1-31/32	29/64	5/8	9/64	1
2-30507	3/0	1/2	ORANGE	3-31/32	29/32	2-23/32	29/64	5/8	9/64	1-3/4
2-40387	4/0	3/8	PURPLE	3-11/32	1-1/64	1-31/32	29/64	45/64	5/32	1
2-40507	4/0	1/2	PURPLE	4-1/8	1-1/64	2-3/4	29/64	45/64	5/32	1-3/4
2-250387	250 MCM	3/8	YELLOW	3-7/16	1-9/64	1-31/32	29/64	25/32	3/16	1
2-250507	250 MCM	1/2	YELLOW	4-1/4	1-9/64	2-25/32	1/2	25/32	3/16	1-3/4
2-300387	300 MCM	3/8	WHITE	3-19/32	1-7/32	2-1/64	29/64	27/32	3/16	1
2-300507	300 MCM	1/2	WHITE	4-13/32	1-7/32	2-13/16	1/2	27/32	3/16	1-3/4
2-350387	350 MCM	3/8	RED	3-23/32	1-5/16	1-31/32	29/64	29/32	13/64	1
2-350507	350 MCM	1/2	RED	4-9/16	1-5/16	2-13/16	1/2	29/32	13/64	1-3/4
2-400387	400 MCM	3/8	BLUE	3-13/16	1-13/32	2	29/64	31/32	7/32	1
2-400507	400 MCM	1/2	BLUE	4-21/32	1-13/32	2-27/32	1/2	31/32	7/32	1-3/4
2-500387	500 MCM	3/8	BROWN	4-1/16	1-37/64	2	29/64	1-3/32	1/4	1
2-500507	500 MCM	1/2	BROWN	4-29/32	1-37/64	2-7/8	1/2	1-3/32	1/4	1-3/4

High conductivity wrought copper, two holes to prevent turning on the bus bar, electro tin plate to minimize corrosion. Colour code designates cable size and tool setting die. Chamfered ends provide easy cable insertion.

## COMPRESSION LUGS



L-4147



B15

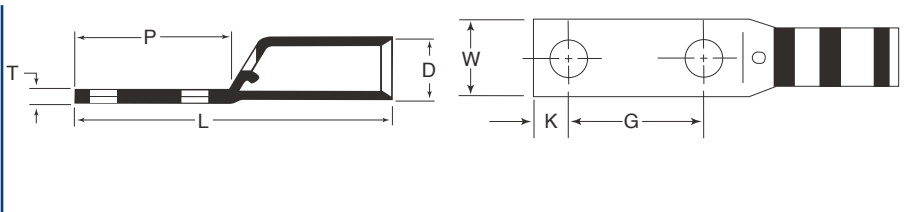
**COPPER COMPRESSION LUGS, LONG BARREL, ONE HOLE, 600V, WITH SIGHT HOLE, SQUARED OFF TONGUE**

Lugs

PART NUMBER	AWG	STUD SIZE	COLOUR CODE	DIMENSIONS IN INCHES					
				L	W	P	K	D	T
L-8107	8	10	RED	1-21/32	11/32	21/32	1/4	1/4	5/64
L-6147	6	1/4	BLUE	1-45/64	13/32	21/32	1/4	9/32	5/64
L-4147	4	1/4	GREY	1-3/4	1/2	45/64	19/64	23/64	7/64
L-2147	2	1/4	BROWN	2-1/16	39/64	51/64	11/32	7/16	1/8
L-2567	2	5/16	BROWN	2-1/16	39/64	51/64	11/32	7/16	1/8
L-2387	2	3/8	BROWN	2-1/16	39/64	51/64	11/32	7/16	1/8
L-1147	1	1/4	GREEN	2-5/32	11/16	13/16	11/32	31/64	9/64
L-1567	1	5/16	GREEN	2-5/32	11/16	13/16	11/32	31/64	9/64
L-1387	1	3/8	GREEN	2-5/32	11/16	13/16	11/32	31/64	9/64
L-10567	1/0	5/16	PINK	2-11/32	49/64	15/16	13/32	17/32	9/64
L-10387	1/0	3/8	PINK	2-11/32	49/64	15/16	13/32	17/32	9/64
L-10507	1/0	1/2	PINK	2-11/32	49/64	15/16	13/32	17/32	9/64
L-20567	2/0	5/16	BLACK	2-1/2	53/64	1-5/64	29/64	37/64	9/64
L-20387	2/0	3/8	BLACK	2-1/2	53/64	1-5/64	29/64	37/64	9/64
L-20507	2/0	1/2	BLACK	2-1/2	53/64	1-5/64	29/64	37/64	9/64
L-30567	3/0	5/16	ORANGE	2-45/64	29/32	1-5/32	29/64	5/8	9/64
L-30387	3/0	3/8	ORANGE	2-45/64	29/32	1-5/32	29/64	5/8	9/64
L-30507	3/0	1/2	ORANGE	2-45/64	29/32	1-5/32	29/64	5/8	9/64
L-40567	4/0	5/16	PURPLE	3-3/64	1-1/64	1-13/64	1/2	45/64	5/32
L-40387	4/0	3/8	PURPLE	3-3/64	1-1/64	1-13/64	1/2	45/64	5/32
L-40507	4/0	1/2	PURPLE	3-3/64	1-1/64	1-13/64	1/2	45/64	5/32
L-250567	250 MCM	5/16	YELLOW	3-11/32	1-9/64	1-1/4	1/2	25/32	3/16
L-250387	250 MCM	3/8	YELLOW	3-11/32	1-9/64	1-1/4	1/2	25/32	3/16
L-250507	250 MCM	1/2	YELLOW	3-11/32	1-9/64	1-1/4	1/2	25/32	3/16
L-300387	300 MCM	3/8	WHITE	3-1/2	1-7/32	1-17/64	1/2	27/32	3/16
L-300507	300 MCM	1/2	WHITE	3-1/2	1-7/32	1-17/64	1/2	27/32	3/16
L-350387	350 MCM	3/8	RED	3-45/64	1-5/16	1-5/16	9/16	29/32	13/64
L-350507	350 MCM	1/2	RED	3-45/64	1-5/16	1-5/16	9/16	29/32	13/64
L-400387	400 MCM	3/8	BLUE	3-29/32	1-13/32	1-27/64	9/16	31/32	7/32
L-400507	400 MCM	1/2	BLUE	3-29/32	1-13/32	1-27/64	9/16	31/32	7/32
L-500387	500 MCM	3/8	BROWN	4-1/2	1-37/64	1-7/16	9/16	1-3/32	1/4
L-500507	500 MCM	1/2	BROWN	4-1/2	1-37/64	1-7/16	9/16	1-3/32	1/4

High conductivity wrought copper, electro tin plate to minimize corrosion. Long barrel permits two crimps due to heavy loads. Colour code designates cable size and tool setting die. Chamfered ends provide easy cable insertion.

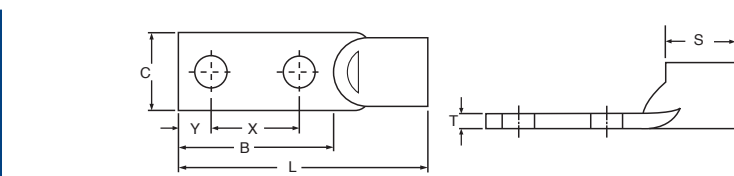
B16



### COPPER COMPRESSION LUGS, LONG BARREL, TWO HOLES, 600V

PART NUMBER	AWG	STUD SIZE	COLOUR CODE	DIMENSIONS IN INCHES						
				L	W	P	K	D	T	G
L2-8107	8	10	RED	2-1/4	11/32	1-17/64	1/4	1/4	5/64	5/8
L2-6147	6	1/4	BLUE	2-5/16	13/32	1-9/32	1/4	9/32	5/64	5/8
L2-4147	4	1/4	GREY	2-11/32	1/2	1-5/16	5/16	23/64	7/64	5/8
L2-2147	2	1/4	BROWN	2-13/16	5/8	1-17/32	11/32	7/16	1/8	3/4
L2-2567	2	5/16	BROWN	2-13/16	5/8	1-17/32	11/32	7/16	1/8	3/4
L2-1147	1	1/4	GREEN	3-3/32	11/16	1-3/41	11/32	31/64	9/64	3/4
L2-1567	1	5/16	GREEN	3-3/32	11/16	1-3/4	11/32	31/64	9/64	3/4
L2-10567	1/0	5/16	PINK	3-7/32	49/64	1-13/16	13/32	17/32	9/64	3/4
L2-10387	1/0	3/8	PINK	3-7/32	49/64	1-13/16	13/32	17/32	9/64	3/4
L2-20387	2/0	3/8	BLACK	4-1/2	53/64	3-1/16	5/8	37/64	9/64	1-3/4
L2-20507	2/0	1/2	BLACK	4-1/2	53/64	3-1/16	5/8	37/64	9/64	1-3/4
L2-30387	3/0	3/8	ORANGE	4-21/32	29/32	3-3/32	5/8	5/8	9/64	1-3/4
L2-30507	3/0	1/2	ORANGE	4-21/32	29/32	3-3/32	5/8	5/8	9/64	1-3/4
L2-40387	4/0	3/8	PURPLE	4-31/32	1-1/64	3-3/32	5/8	45/64	5/32	1-3/4
L2-40507	4/0	1/2	PURPLE	4-31/32	1-1/64	3-3/32	5/8	45/64	5/32	1-3/4
L2-250387	250 MCM	3/8	YELLOW	5-7/32	1-9/64	3-3/32	5/8	25/32	3/16	1-3/4
L2-250507	250 MCM	1/2	YELLOW	5-7/32	1-9/64	3-3/32	5/8	25/32	3/16	1-3/4
L2-300387	300 MCM	3/8	WHITE	5-11/32	1-7/32	3-1/8	5/8	27/32	3/16	1-3/4
L2-300507	300 MCM	1/2	WHITE	5-11/32	1-7/32	3-1/8	5/8	27/32	3/16	1-3/4
L2-350387	350 MCM	3/8	RED	5-1/2	1-5/16	3-1/8	5/8	29/32	13/64	1-3/4
L2-350507	350 MCM	1/2	RED	5-1/2	1-5/16	3-1/8	5/8	29/32	13/64	1-3/4
L2-400387	400 MCM	3/8	BLUE	5-19/32	1-13/32	3-1/8	5/8	31/32	7/32	1-3/4
L2-400507	400 MCM	1/2	BLUE	5-19/32	1-13/32	3-1/8	5/8	31/32	7/32	1-3/4
L2-500387	500 MCM	3/8	BROWN	6-7/32	1-37/64	3-5/32	5/8	1-3/32	1/4	1-3/4
L2-500507	500 MCM	1/2	BROWN	6-7/32	1-37/64	3-5/32	5/8	1-3/32	1/4	1-3/4

High conductivity wrought copper, electro tin plate to minimize corrosion, two holes to prevent turning on bus bar. Long barrel permits two crimps due to heavy load. Colour code designates cable size and tool setting die. Chamfered ends provide easy cable insertion.



### MAC COPPER COMPRESSION LUGS, SHORT BARREL, TWO HOLES

PART NUMBER	AWG	STUD SIZE	DIMENSIONS IN INCHES						
			L	S	B	C	X	Y	T
MSB600-8N	600 MCM	1/2	4-7/8	1-3/8	2-13/16	1-11/16	1-3/4	1/2	17/64
MSB750-8N	750 MCM	1/2	5-7/32	1-5/8	2-13/16	1-29/32	1-3/4	1/2	17/64
MSB800-8N	800 MCM	1/2	5-7/32	1-5/8	2-13/16	1-31/32	1-3/4	1/2	19/64
MSB1000-8N	1000 MCM	1/2	5-9/16	1-7/8	2-13/16	2-3/16	1-3/4	1/2	21/64
MSB1500-8N	1500 MCM	1/2	6-1/16	2-3/4	2-13/16	2-11/16	1-3/4	1/2	25/64
MSB2000-8N	2000 MCM	1/2	6-3/8	3-1/16	2-13/16	3-1/16	1-3/4	1/2	15/32

**MSB Series:** A two hole, single indent lug which is produced from pure, seamless copper tubing, the MSB Series is tin-plated for added resistance to corrosion. The window in the back of the barrel permits visual inspection of the cable insertion. CSA and UL Approved.

Lugs



COMPRESSION CONNECTORS

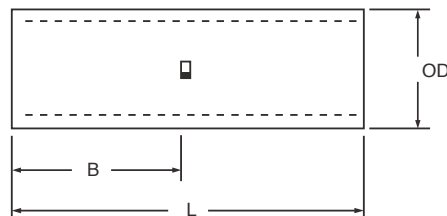
B17



COPPER COMPRESSION CONNECTORS  
STANDARD BARREL, COLOUR CODED, 600V

PART NUMBER	AWG	COLOUR CODE	DIMENSIONS IN INCHES		
			L	D	A
8007	8	RED	1	1/4	11/64
6007	6	BLUE	1	9/32	13/64
4007	4	GREY	1	23/64	1/4
2007	2	BROWN	1-1/4	7/16	5/16
1007	1	GREEN	1-7/16	31/64	11/32
10007	1/0	PINK	1-7/16	17/32	25/64
20007	2/0	BLACK	1-9/16	37/64	7/16
30007	3/0	ORANGE	1-11/16	5/8	31/64
40007	4/0	PURPLE	1-13/16	45/64	35/64
250007	250 MCM	YELLOW	2-3/16	25/32	19/32
300007	300 MCM	WHITE	2-3/16	27/32	21/32
350007	350 MCM	RED	2-3/16	29/32	45/64
400007	400 MCM	BLUE	2-3/4	31/32	3/4
500007	500 MCM	BROWN	2-3/4	1-3/32	27/32
600007	600 MCM	GREEN	3		

High conductivity wrought copper, seamless construction. Chamfered ends provide easy cable insertion. Colour code designates cable size and tool setting die.



MAC SHORT BARREL COPPER COMPRESSION COUPLER

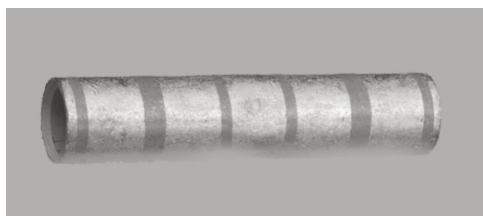
PART NUMBER	AWG	DIMENSIONS IN INCHES		
		B	L	OD
MSC600	600 MCM	1-3/8	2-7/8	1-3/16
MSC750	750 MCM	1-5/8	3-3/8	1-5/16
MSC800	800 MCM	1-5/8	3-3/8	1-11/32
MSC1000	1000 MCM	1-7/8	3-7/8	1-1/2
MSC1500	1500 MCM	2	4-1/8	1-27/32
MSC2000	2000 MCM	2-1/4	4-5/8	2-1/8

**MSC Series Coupler** This short barrel end to end coupler is fabricated of pure, seamless copper tubing and is tin-plated for added resistance to corrosion. Produced in a wide range of cable sizes from 6 AWG to 2000 MCM, this economical connector is installed with standard compression tooling. CSA and UL Approved.

Lugs

## COMPRESSION CONNECTORS

B18

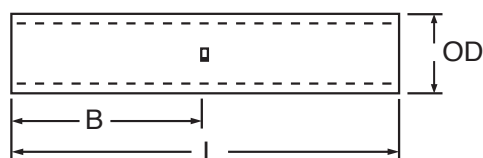
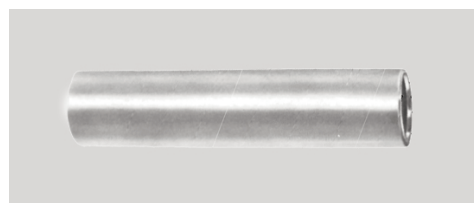


### COPPER COMPRESSION CONNECTORS LONG BARREL, COLOUR CODED, 600V

PART NUMBER	AWG	COLOUR CODE	DIMENSIONS IN INCHES		
			L	D	A
L-8007	8	RED	2	1/4	11/64
L-6007	6	BLUE	2	9/32	13/64
L-4007	4	GREY	2	23/64	1/4
L-2007	2	BROWN	2	7/16	5/16
L-1007	1	GREEN	2-1/4	31/64	11/32
L-10007	1/0	PINK	2-1/4	17/32	25/64
L-20007	2/0	BLACK	2-3/8	37/64	7/16
L-30007	3/0	ORANGE	2-1/2	5/8	31/64
L-40007	4/0	PURPLE	3	45/64	35/64
L-250007	250 MCM	YELLOW	3-5/8	25/32	19/32
L-300007	300 MCM	WHITE	3-11/16	27/32	21/32
L-350007	350 MCM	RED	3-15/16	29/32	45/64
L-400007	400 MCM	BLUE	3-15/16	31/32	3/4
L-500007	500 MCM	BROWN	4-15/16	1-3/32	27/32

High conductivity wrought copper, seamless construction. Chamfered ends provide easy cable insertion. Colour code designates cable size and tool setting die.

## COPPER COMPRESSION COUPLER

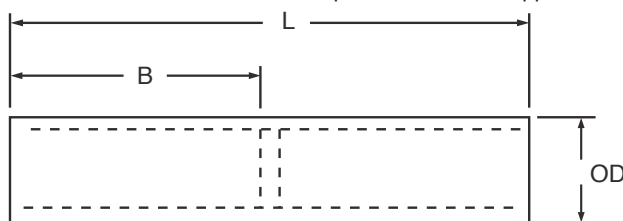


B19

### MAC LONG BARREL COPPER COMPRESSION COUPLER

PART NUMBER	AWG	DIMENSIONS IN INCHES		
		B	L	OD
MRC600	600 MCM	2-11/16	5-1/2	1-3/16
MRC750	750 MCM	2-13/16	5-7/8	1-5/16
MRC800	800 MCM	2-7/8	6	1-11/32
MRC1000	1000 MCM	3	6-1/8	1-1/2
MRC1250	1250 MCM	3-3/16	6-1/2	1-11/16
MRC1500	1500 MCM	3-3/16	6-1/2	1-27/32
MRC1750	1750 MCM	3-7/16	7	2
MRC2000	2000 MCM	3-7/16	7	2-1/8

**MRC Series Coupler:** The MRC long barrel copper coupler is produced in a wide range of cable sizes from 6 AWG to 2000 MCM. Fabricated of pure, seamless copper tubing and tin-plated for added corrosion resistance. This end to end cable coupler is installed with standard compression tooling. Centre cable stops are provided to assure proper length of cable insertion, and smooth chamfers at each end of the connector add ease of installation. Sizes above 250 MCM are designed for two indents on each end of coupler. CSA and UL Approved.



Lugs

### MAC COPPER COMPRESSION COUPLER, WITH OIL STOP BARRIER

PART NUMBER	AWG	DIMENSIONS IN INCHES		
		B	L	OD
MRCP6	6	1-1/8	2-3/8	9/32
MRCP4	4	1-1/8	2-3/8	11/32
MRCP3	3	1-1/4	2-5/8	3/8
MRCP2	2	1-1/4	2-5/8	13/32
MRCP1	1	1-3/8	2-7/8	15/32
MRCP1/0	1/0	1-3/8	2-7/8	1/2
MRCP2/0	2/0	1-1/2	3-1/8	9/16
MRCP3/0	3/0	1-1/2	3-1/8	5/8
MRCP4/0	4/0	1-5/8	3-3/8	11/16
MRCP250	250 MCM	1-5/8	3-3/8	3/4
MRCP300	300 MCM	2	4-1/8	13/16
MRCP350	350 MCM	2	4-1/8	7/8
MRCP400	400 MCM	2-1/8	4-3/8	15/16
MRCP500	500 MCM	2-1/4	4-5/8	1-1/16
MRCP600	600 MCM	2-11/16	5-1/2	1-3/16
MRCP750	750 MCM	2-7/8	5-7/8	1-5/16
MRCP800	800 MCM	2-15/16	6	1-11/32
MRCP1000	1000 MCM	3	6-1/8	1-1/2

**MRCP Series Coupler:** The MRCP long barrel compression coupler with oil seal barrier is available in cable sizes ranging from 6 AWG to 1000 MCM. A pure copper oil stop barrier is brazed in the centre of the connector barrel, assuring a positive seal between cables. Fabricated of pure, seamless copper tubing and tin-plated for corrosion resistance. CSA and UL Approved.

## STRAIGHT CONNECTORS MOVEABLE SLEEVES

B20

**General Information:** All Etlin Daniels Solderless Lugs are made from pure electrolytic copper. The sleeves are made of seamless tubing for mechanical strength and electrical conductivity; the tongues are made from thick solid copper buss bar. These lugs require no special tooling and can be installed with screwdriver, wrench or pliers. They are re-useable and cover a wide range of conductor sizes, which reduces inventory costs.

### Copper Lugs with Moveable Sleeves:

Type ETU: Twin Sleeve, Offset Tongue

Type EU: Offset Tongue, One Hole

Type FT: Fixed Tongue, One Hole

**Copper Lugs:** Type EO: One-Piece Body and Tongue

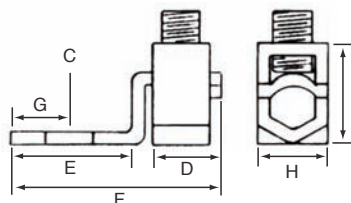
### Copper Connectors

### Aluminum Lugs – Dual Rated

Type CA: Single Hole

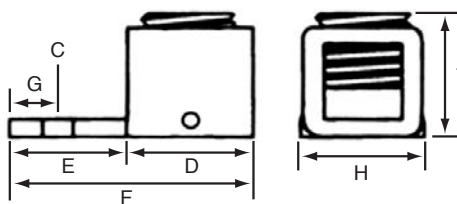
Type TCA: Two Holes

Special mounting holes, tongue shapes and other variations of the above lugs are available on special order. Please consult the factory. Custom designs can be engineered and built according to your special application or your individual specifications. Steel screws, cadmium plated are standard design. Non-ferrous components can be furnished with cadmium, silver flash or nickel plating at extra cost.



### TYPE EU - OFFSET TONGUE - ONE MOUNTING HOLE - MOVEABLE SLEEVE

ITEM NUMBER	AMP RATING	WIRE RANGE	DIMENSIONS							SCREW TYPE
			D	G	E	T	F	C	H	
EU25	25	10 - 14	.297	.187	.438	.625	1.000	.156	.312	SLOT-FILLISTER
EU35	35 - 50	6 - 14	.438	.219	.531	.687	1.187	.203	.375	SLOT-FILLISTER
EU70	70 - 90	2 - 8	.500	.250	.656	1.000	1.531	.266	.500	SLOT-FILLISTER
EU125	125	1/0 - 2	.594	.438	.812	1.250	2.000	.266	.625	SLOT-HEXAGON
EU225	225	4/0 - 2/0	1.000	.500	1.156	1.750	2.625	.343	1.000	HEXAGON
EU400	400	500 MCM - 4/0	1.500	.922	1.875	2.625	4.250	.406	1.500	HEXAGON
EU650	650	1000 MCM - 600 MCM	1.875	1.187	1.875	3.687	4.625	.531	2.000	HEXAGON



### TYPE FT - FIXED TONGUE - ONE MOUNTING HOLE

ITEM NUMBER	AMP RATING	WIRE RANGE	DIMENSIONS							SCREW TYPE
			D	G	E	T	F	C	H	
FT25	25	10 - 14	.281	.187	.531	.531	.875	.156	.312	SLOT-HEADLESS
FT35	35 - 50	6 - 14	.375	.219	.531	.625	1.000	.203	.375	SLOT-HEADLESS
FT70	70 - 90	4 - 14	.500	.312	.750	.750	1.250	.266	.500	SLOT-FILLISTER
FT125	125	1/0 - 6	.625	.438	.906	1.000	1.531	.266	.625	SLOT-HEXAGON
FT225	225	4/0 - 2	1.000	.562	1.062	1.625	2.187	.344	1.000	HEXAGON
FT400*	400	500 MCM - 2/0	1.375	.875	1.687	1.562	3.187	.438	1.500	HEXAGON

\*PRESSURE PAD IS INCLUDED IN THIS SIZE

# ALUMINUM LUGS AND CONNECTORS

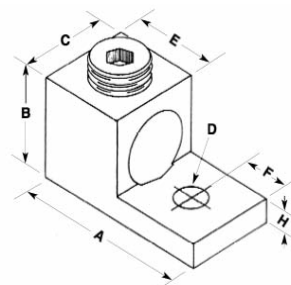
B21

Lugs

## General Information

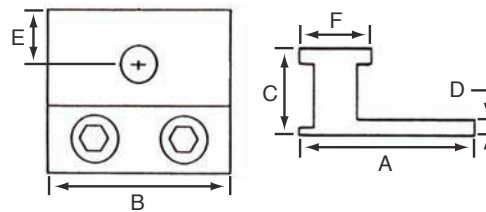
Made from high grade Aluminum Alloy No. 6061-T6 or 65ST6 extrusion for excellent conductivity. They feature high yield strength, light-weight, and solid construction which provides long life with no elongation. They are 100% re-useable requiring no special installation tools. Electro tin plating by special triple tin plating process, protects against galvanic corrosion when used with copper conductors.

All dimensions are approximate.



### TYPE CA - DUAL RATED - SINGLE HOLE LUG

ITEM NUMBER	WIRE RANGE	DIMENSIONS						MOUNTING HOLE (D)
		A	B	C	E	F	H	
CA-6	6 - 14	0.835	0.500	0.375	0.375	0.250	0.100	0.193
CA-2	2 - 12	1.156	0.560	0.500	0.470	0.470	0.100	0.265
CA-0	1/0 - 14	1.468	0.781	0.625	0.625	0.437	0.187	0.265
CA-250	250 MCM - 6	2.000	1.125	1.000	1.000	0.406	0.250	0.328
CA-350	350 MCM - 6	2.250	1.250	1.125	1.125	0.500	0.250	0.406
CA-500	500 MCM - 6	2.812	1.562	1.500	1.218	0.875	0.312	0.406
CA-600	600 MCM - 4	3.125	1.562	1.500	1.375	0.875	0.437	0.531
CA-800	800 MCM - 350 MCM	3.375	1.937	1.575	1.625	0.875	0.500	0.656
CA-1000	1000 MCM - 500 MCM	3.375	1.937	1.750	1.625	0.875	0.500	0.656



### TYPE TCA - DUAL RATED - TWO CONDUCTOR - SINGLE HOLE LUG

ITEM NUMBER	WIRE RANGE	DIMENSIONS						MOUNTING HOLE
		A	B	C	D	E	F	
TCA-250	2:250 MCM - 6	1.875	1.648	1.000	0.250	0.470	0.875	0.406
TCA-350	2:350 MCM - 4	2.125	1.920	1.13	0.293	0.500	1.000	0.406
TCA-600	3:250 MCM - 2	2.613	2.575	1.50	0.423	0.690	1.200	0.562





## NEUTRAL BAR OVERVIEW MAIN LINE NEUTRAL BARS

B22

### General Information

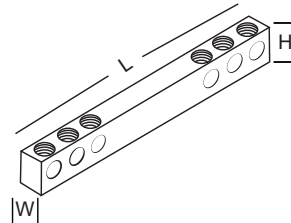
Unassembled for the use of manufacturers of Switch and Panel Boards who may find it convenient to produce special neutral bar assemblies, suitable for their own particular needs. A fast and secure connection is assured by inserting the wire into the "V" shaped hole and tightening the screw. The bars are constructed of pure electrolytic seamless copper tubing, ensuring high conductivity and superior strength.

### AVAILABLE SCREW TYPES

SCREW TYPE 1		SCREW TYPE 2	
	<b>STYLE:</b> HEADLESS SET SCREW. <b>SLOT:</b> SLOTTED <b>MATERIAL:</b> STEEL ZINC PLATED		<b>STYLE:</b> HEADED MACHINE SCREW. <b>SLOT:</b> SLOTTED <b>MATERIAL:</b> STEEL ZINC PLATED
SCREW TYPE 3		SCREW TYPE 4	
	<b>STYLE:</b> HEADED MACHINE SCREW. <b>SLOT:</b> COMBINATION SQUARE, SOCKET/SLOT <b>MATERIAL:</b> STEEL ZINC PLATED		<b>STYLE:</b> HEADLESS SET SCREW. <b>SLOT:</b> HEX SOCKET/SLOT <b>MATERIAL:</b> ALUMINUM TIN PLATED

\* NORMALLY SUPPLIED WITH TYPE 1

### TYPE N70 - 70 AMP MAIN LINE NEUTRAL BAR ASSEMBLIES - 14-4 AWG



ITEM NUMBER	NO. OF CIRCUIT TAPS	RANGE LOAD	LENGTH	HEIGHT WITH MAX COND	WIDTH	TWO MOUNTING HOLES
N70-4	4	14-6	2.750	.750	.344	.203*
N70-6	6	14-6	3.500	.750	.344	.203*
N70-8	8	14-6	4.438	.750	.344	.203*
N70-10	10	14-6	5.125	.750	.344	.203*
N70-12	12	14-6	5.938	.750	.344	.203*
N70-14	14	14-6	6.687	.750	.344	.203*

### TYPE N125 - 125 AMP MAIN LINE NEUTRAL BAR ASSEMBLIES - 1/0-2 AWG

ITEM NUMBER	NO. OF CIRCUIT TAPS	RANGE LOAD	LENGTH	HEIGHT WITH MAX COND	WIDTH	TWO MOUNTING HOLES
N125-16	16	14-6	4.750	1.438	1.344	.203*
N125-20	20	14-6	5.500	1.438	1.344	.203*
N125-22	22	14-6	5.750	1.438	1.344	.203*
N125-24	24	14-6	6.312	1.438	1.344	.203*
N125-26	26	14-6	6.500	1.438	1.344	.203*
N125-28	28	14-6	7.125	1.438	1.344	.203*
N125-30	30	14-6	7.132	1.438	1.344	.203*

\*PLEASE SPECIFY MOUNTING HOLE POSITION