

Cable Ties

Technical Data	E2
Cable Tie Cross Reference	E3
Nylon Ties	
Standard Nylon Tie	E4
Weather Resistant Ties	E5
Mounting Ties	E6
Speciality Ties	E6-E9
Steel Ties	
Ladder Type	E10
Ball Lock Tie	E11
Marker Plates	E11
Mounting Hardware	E12-E13

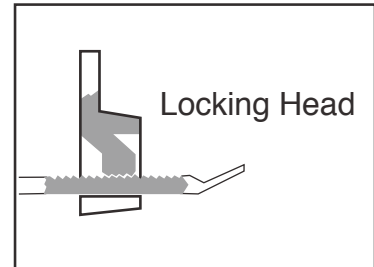
ETLIN DANIELS reserves the right to discontinue, modify designs and change specifications without incurring obligation.

While every effort is made to ensure that descriptions, specifications and other information in this catalogue are correct, no warranty is given in respect thereof and the company shall not be liable for any error herein.

Copyright © 2013 **ETLIN DANIELS**

Standard Nylon Cable Ties Suffix Key

MATERIAL	COLOUR	SUFFIX CODE
NYLON 66	NATURAL	--
NYLON 66	BLACK	B
NYLON 66 - WEATHER RESISTANT	BLACK	UV
NYLON 66 - HEAT STABILIZED	NATURAL	HS
NYLON 66 - FLAME RETARDANT	NATURAL	FR



General Information:

Engineered for simple and secure wire and cable wrapping, Etlin Cable Ties are designed for quick and easy use. Strong and flexible, the Ties can be wrapped around a bundle quickly and the tail inserted into a patented self-locking head. The smaller standard size ties have bent tails to facilitate rapid tail-to-head insertion by the user.

Etlin Cable Ties are made of high-strength nylon that resists abrasion and chemicals such as common oils, greases, solvents, dilute acids and alkalis. They are fungus resistant, self-extinguishing, and have excellent dielectric properties. Designed for continuous use from -40°F to +185°F (-40°C to +85°C) and will withstand temperatures up to 300°F (149°C). They also meet applicable Military Specifications.

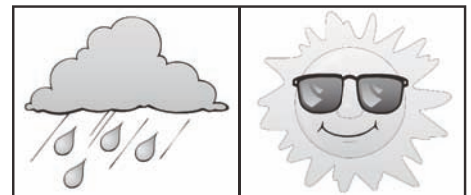
Extra Heavy Duty Cable Ties

For applications where higher tensile strength is needed, part numbers have HD as the suffix.

Weather Resistant Ties

For applications exposed to outside elements, a Weather Resistant Tie is available. Carbonate A was added for greater resistance to ultra violet in outdoor usage, which prolongs the useful life of the cable tie. Black in colour, all Ties shown are available as Weather Resistant Ties. To order, add the suffix "-UV" to the part number.

UR Listed.



CABLE TIE CROSS REFERENCE

Cross Reference By Manufacturer

E3

STANDARD CABLE TIES

ETLIN	MIL SPEC	THOMAS & BETTS	PANDUIT	BURNDY	HELLERMAN TYTON	AVERY DENNISON	CORDS HEYCO
NT400	MS3367-4	QTY-23M	PLT1M-C	--	T18R	08432	NT-70
NT550L	MS3367-5	--	PLT1.5M-C	--	T18I	--	NT-70L
NT550	MS3367-5	TY-24M	PLT1.51-C	TF4	T30R	08376	NT-90
NT800	--	TY-242M	PLT21-C	--	T40R	08377	NT-170
NT1100	MS3367-7	TY-253M	PLT3S-C	--	T50I	08471	NT-250
NT1400HD	MS3367-3	TY-27M	PLT4H-C	TF7	T120R	08378	NT-340H

MOUNTING TIES

ETLIN	MIL SPEC	THOMAS & BETTS	PANDUIT	BURNDY	HELLERMAN TYTON	AVERY DENNISON	CORDS HEYCO
MNT550	--	TY-34M	PLC1.51	--	T30MR	--	MNT-90
MNT675	--	TY-35M	PLC2S	TF5H	T50MR	08415	MNT-150

PUSH MOUNT TIES

ETLIN	MIL SPEC	THOMAS & BETTS	PANDUIT	BURNDY	HELLERMAN TYTON	AVERY DENNISON	CORDS HEYCO
PIMNT750	--	TY-38M	PLP2S	--	T50R/SF	08414	PMT-150

IDENTIFICATION TIES

ETLIN	MIL SPEC	THOMAS & BETTS	PANDUIT	BURNDY	HELLERMAN TYTON	AVERY DENNISON	CORDS HEYCO
IDNT400	MS3368-5	TY-51M	PLM1M	--	IT18R	08412	--
IDNT750	MS3368-1	TY-46M	PLM2S	TF5L	IT50R	08413	LT-150

MOUNTING HARDWARE

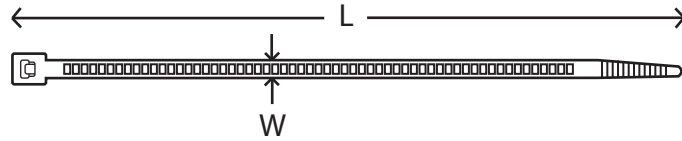
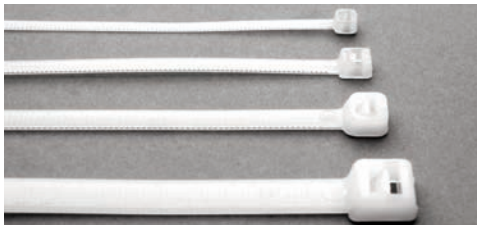
ETLIN	MIL SPEC	THOMAS & BETTS	PANDUIT	BURNDY	HELLERMAN TYTON	AVERY DENNISON	CORDS HEYCO
4-SMPA	--	TY344A	ABMM-A	--	MB-4A	08461	MP-4AS
4-MPA	--	TY342A	ABM4S-A	--	MB4A/SH	08463	MP-4A
CM-4	--	TC140	TM1S4	--	--	10044	--
CM-8	--	TC141	TM2S8	--	CTM-1	10045	MP-S-68
CM-10	--	TC142	TM3S10	--	CTM-3	10046	MP-S-10
PIM-250	--	TC823	PM2H25	--	TM1SF1	10056	MP-PM-25
LPM-8	--	TC502	LPMS-S8	--	MB-2	08458	--
TA-8	--	TC828	TA1S8	--	CTAM-1	10027	--
TA-10	--	--	TA1S10	--	CTAM-2	10028	--

This cross-reference has been prepared to aid in the selection of Etlin materials. Although checked for accuracy, we recommend familiarity with our product before purchase.

ETLIN DANIELS CANNOT ASSUME RESPONSIBILITY FOR ERRORS, OMISSIONS OR CHANGES.

STANDARD NYLON CABLE TIES

E4

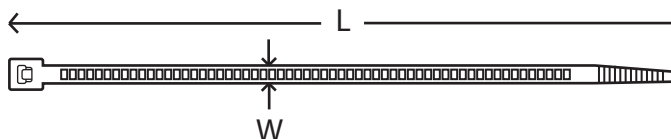


Standard Nylon Cable Ties

ITEM NUMBER	LENGTH (L)		WIDTH (W)		MAXIMUM BUNDLE DIAMETER		MINIMUM TENSILE STRENGTH	MILITARY SPEC NO.
	in	mm	in	mm	in	mm		
NT400	4.00	102	0.10	2.5	0.625	15.9	18 LBS	MS3367-4
NT550L	5.50	140	0.10	2.5	0.750	19.1	18 LBS	MS3367-4
NT800L	8.00	203	--	--	2.000	50.8	18 LBS	
NT550	5.50	142	0.14	3.6	1.250	31.8	30 LBS	MS3367-5
NT1100L	11.00	279	--	--	3.000	76.2	40 LBS	
NT800	8.00	203	0.14	3.6	2.000	50.8	50 LBS	
NT1100	11.00	279	0.18	4.6	3.000	76.2	50 LBS	MS3367-7
NT1400	14.50	368	0.18	4.6	4.000	102	50 LBS	MS3367-2
NT2000L	19-11/16	500	0.189	4.8	5.91	150	50 LBS	
NT3600L	36.00	914	0.189	4.8	10.63	270	50 LBS	
NT1100HD	11.00	280	0.30	7.6	3.07	78	120 LBS	
NT1400HD	14.75	375	0.30	7.6	4.000	102	120 LBS	MS3367-3
NT1800	17.75	451	--	--	5.250	133	175 LBS	
NT2100	21.50	546	--	--	6.000	152	175 LBS	
NT2400	24.00	610	0.354	9.0	7.28	185	175 LBS	
NT2800	28.00	710	0.354	9.0	8.66	220	175 LBS	
NT3200	32.00	813	--	--	9.500	241	175 LBS	
NT3300HD	33.00	838	0.350	8.9	10.000	254	175 LBS	
NT4800	48.00	1219	0.354	9.0	15.00	380	175 LBS	

NYLON-66
Add "-C" suffix for 100 pack

WEATHER RESISTANT CABLE TIES



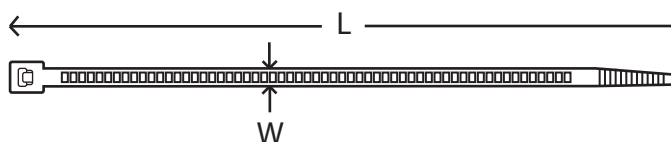
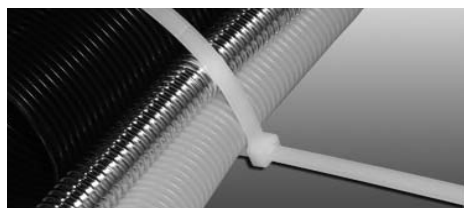
E5

Weather Resistant Nylon Cable Ties

ITEM NUMBER	LENGTH (L)		WIDTH (W)		MAXIMUM BUNDLE DIAMETER		MINIMUM TENSILE STRENGTH
	in	mm	in	mm	in	mm	
NT400-UV	4.00	100	0.10	2.5	0.984	25	18 LBS
NT550L-UV	5.50	142	0.10	2.5	1.38	35	18 LBS
NT800L-UV	8.00	203	0.10	2.5	2.17	55	18 LBS
NT550-UV	5.50	142	0.126	3.2	1.38	35	40 LBS
NT800-UV	8.00	203	0.181	4.6	2.17	55	50 LBS
NT1100L-UV	11.50	292	0.142	3.6	3.35	85	40 LBS
NT1100-UV	11.00	280	0.189	4.8	3.19	81	50 LBS
NT1400-UV	14.50	368	0.189	4.8	4.02	102	50 LBS
NT1800-UV	17.75	450	0.189	4.8	5.12	130	50 LBS
NT1100HD-UV	11.00	280	0.30	7.6	3.07	78	120 LBS
NT1400HD-UV	15.00	380	0.30	7.6	4.33	110	120 LBS
NT2100-UV	21-11/16	550	0.314	8.0	6.54	166	175 LBS
NT2400-UV	24.00	605	0.354	9.0	7.28	185	175 LBS
NT2800-UV	28.00	705	0.354	9.0	8.66	220	175 LBS
NT3200-UV	32.00	812	0.354	9.0	9.69	246	175 LBS
NT3600-UV	36.00	914	0.354	9.0	10.63	270	175 LBS
NT4800-UV	48.00	1219	0.354	9.0	15.00	380	175 LBS

Black colour. NYLON-66. Carbonate is added to increase resistance to UV for increased useful life in sunshine/outdoor applications

HVAC Duct Straps



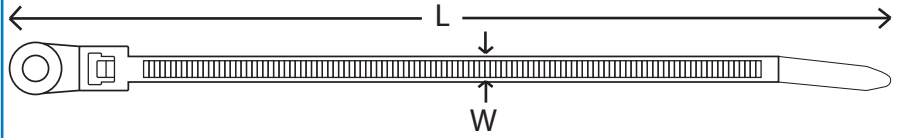
ITEM NUMBER	LENGTH (L)		WIDTH (W)		MAXIMUM BUNDLE DIAMETER		MINIMUM TENSILE STRENGTH
	in	mm	in	mm	in	mm	
NTDT-36-914	36"	914	0.35"	9	10.63	270	175 LBS (80 KGS)
NTDT-37-940	37"	940	0.35"	9	11.22	285	175 LBS (80 KGS)
NTDT-48-1219	48"	1219	0.35"	9	14.96	380	175 LBS (80 KGS)

Heavy Duty NYLON-66, UL 181B-C for non-metallic air ducts (R6-R8 Flex Duct).

Cable Ties

MOUNTING CABLE TIES & SPECIALTY CABLE TIES

E6

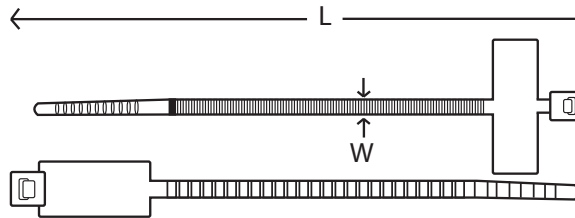
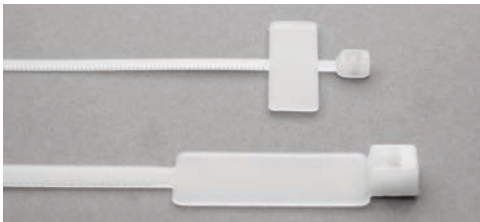


Mounting Cable Ties

ITEM NUMBER	LENGTH (L)		WIDTH (W)		MAXIMUM BUNDLE DIAMETER		MINIMUM TENSILE STRENGTH	SCREW SIZE
	in	mm	in	mm	in	mm		
MNT400	4.00	100	0.10	2.5	0.98	25	18 LBS	#6
MNT550	6.00	150	0.10	2.5	0.750	19.1	40 LBS	#8
MNT675	8.00	203	0.18	4.6	1.750	44.5	50 LBS	#10
MNT1100	11-7/8	300	0.189	4.8	3.35	85	50 LBS	#10
MNT1400	14.00	356	0.30	7.6	4.00	102	120 LBS	0.250

Bundling and mounting is done with one tie. Natural White colour (available in Black). The cable tie can be secured to the panel with a single screw. Made of UL Approved Nylon 66, 94V-2. UR Listed.

Cable Ties



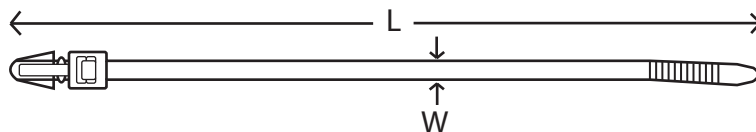
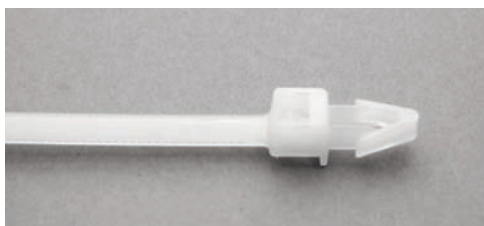
Identification Cable Ties

ITEM NUMBER	LENGTH (L)		WIDTH (W)		MAXIMUM BUNDLE DIAMETER		MINIMUM TENSILE STRENGTH	MILITARY SPEC NO.
	in	mm	in	mm	in	mm		
IDNT400	4.00	100	0.18	4.6	0.750	19.1	18 LBS	MS3368-5
IDNT750	7.00	178	0.18	4.6	1.500	38.1	50 LBS	MS3368-1
IDNT1100	10.63	270	0.18	4.6	2.95	75	50 LBS	

Tie and identify bundles of cable in one operation. Flat areas may be imprinted or written on with a marking pen. Made of UL Approved Nylon 66, 94V-2. UR Listed.

SPECIALTY CABLE TIES

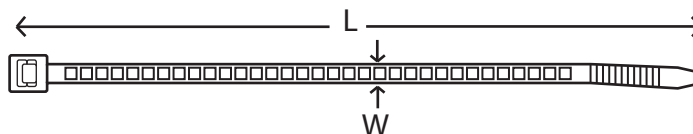
E7



Push Mount Cable Ties

ITEM NUMBER	LENGTH (L)		WIDTH (W)		MAXIMUM BUNDLE DIAMETER		MINIMUM TENSILE STRENGTH	HOLE SIZE
	in	mm	in	mm	in	mm		
PIMNT600	6.125	156	0.15	3.8	1.57	39.9	40 LBS	#10(4.8mm)
PIMNT750	7.50	190	0.18	4.6	1.750	44.5	50 LBS	#10(4.8mm)
PIMNT800	8.00	203	0.19	4.8	1.97	50	50 LBS	0.250(6.4mm)
PIMNT1100	11.00	279	--	--	3.00	76.2	50 LBS	0.250(6.4mm)

Bundle and press the tie into a pre-drilled hole for secure one-piece harness tying and mounting. Made of UL Approved Nylon 66, 94V-2.



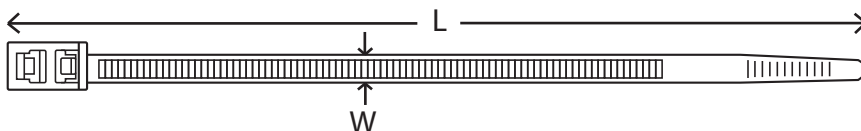
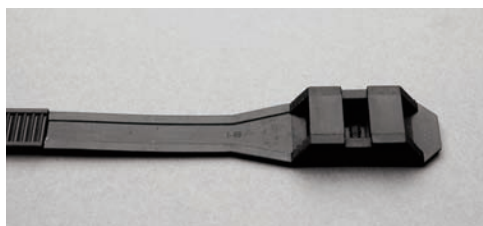
Ladder Cable Ties

ITEM NUMBER	LENGTH (L)		WIDTH (W)		MAXIMUM BUNDLE DIAMETER		MINIMUM TENSILE STRENGTH
	in	mm	in	mm	in	mm	
LNT700	7.00	178	0.14	3.56	1.59	44.5	40 LBS
LNT1100	11.00	279	0.14	3.56	3.000	76.2	50 LBS

Strong open construction for reduced cost.

SPECIALTY CABLE TIES

E8

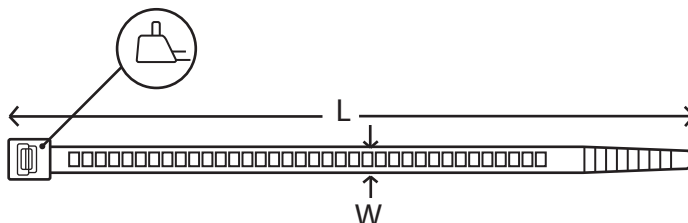


Double Head/Locking Cable Ties

ITEM NUMBER	LENGTH (L)		WIDTH (W)		MAXIMUM BUNDLE DIAMETER		MINIMUM TENSILE STRENGTH
	in	mm	in	mm	in	mm	
DHNT800	8.25	210	0.18	4.6	0.750	19.1	40 LBS
DHNT900	9.25	235	0.354	9.0	2.17	55	120 LBS
DHNT1100	11-7/8	300	0.354	9.0	3.46	88	120 LBS
DHNT1400	14.25	360	0.354	9.0	3.94	100	120 LBS
DHNT2000	20.00	510	0.354	9.0	5.91	150	120 LBS
DHNT2400	24.00	610	0.354	9.0	7.09	180	120 LBS
DHNT3000	30.00	760	0.354	9.0	9.01	230	120 LBS

Designed to harness two cables at once. Black colour. White is available, add suffix –"WT" to part number. Made of UL Approved Nylon 66, 94V-2.

Cable Ties



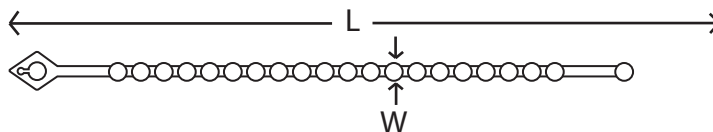
Releasable Cable Ties

ITEM NUMBER	LENGTH (L)		WIDTH (W)		MAXIMUM BUNDLE DIAMETER		MINIMUM TENSILE STRENGTH
	in	mm	in	mm	in	mm	
RNT400	4-15/16	125	0.30	7.6	1.18	30	50 LBS
RNT600	6.00	150	0.30	7.6	1.25	31.75	50 LBS
RNT800	8.00	203	0.30	7.6	2.00	50.8	50 LBS
RNT1100	11.00	280	0.30	7.6	3.00	76.2	50 LBS

Perfect for prototypes and applications requiring service. These ties which are easily assembled by hand or with pliers, remain securely locked until intentionally released by operating the finger catch. Made of UL Approved Nylon 66, 94V-2. Black is available, add suffix –"UV" to part number. UR Listed

SPECIALTY CABLE TIES

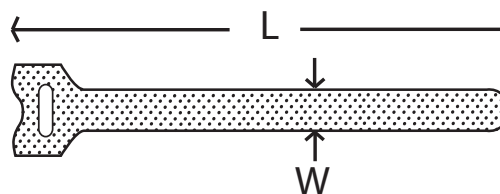
E9



Beaded Cable Ties

ITEM NUMBER	LENGTH (L)		WIDTH (W)		MAXIMUM BUNDLE DIAMETER		MINIMUM TENSILE STRENGTH
	in	mm	in	mm	in	mm	
BNT400	4.50	114	--	--	0.750	19.1	18 LBS
BNT600	6.00	150	--	--	1.125	28.6	30 LBS
BNT800	8.00	203	--	--	2.000	50.8	40 LBS
BNT1000	10.00	250	--	--	2.750	192.1	40 LBS
BNT1100	11.00	280	--	--	3.000	76.2	50 LBS

Easy to install and release. Beaded design keeps wires from shifting or slipping. Made of UL Approved Nylon 66, 94V-2.



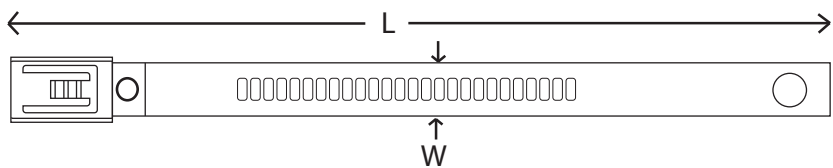
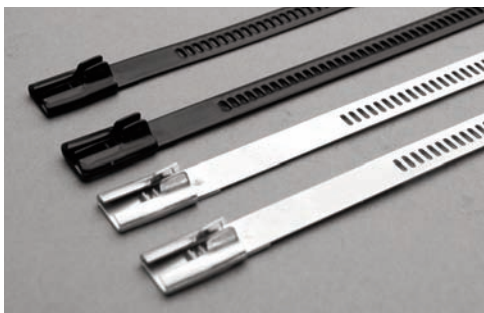
Velcro Ties

ITEM NUMBER	LENGTH (L)		WIDTH (W)		MAXIMUM BUNDLE DIAMETER	
	in	mm	in	mm	in	mm
VT550	5.30	135	.470	12	1.5	38
VT800	8.20	208	.625	16	2.5	64
VT1200	12.20	310	.625	16	3.5	89

Reusable, durable velcro ties.

STAINLESS STEEL CABLE TIES

E10



Stainless Steel Cable Ties - Uncoated Ladder Type

ITEM NUMBER	LENGTH (L)		MAXIMUM BUNDLE DIAMETER (W)	
	in	mm	in	mm
STL-195S	8	195	1.7	45
STL-255S	10	255	2.5	64
STL-335S	13	335	3.5	89
STL-490S	19	490	5.4	139
STL-635S	25	635	7.2	185
STL-195M	8	195	1.7	45
STL-255M	10	255	2.5	64
STL-335M	13	335	3.5	89
STL-490M	19	490	5.4	139
STL-635M	25	635	7.2	185

Stainless Steel Cable Ties

Made from 316 Stainless Steel
 Non-Magnetic.
 W = 0.28" (7 mm)
 T = 0.010" (0.3 mm)
 Tensile Strength S = 75 lbs (34 kg)
 M = 100 lbs (45.3 kg)

In general, stainless steel exhibits excellent resistance to most common acids and bases such as sulfuric acid and sodium hydroxide.

For applications requiring superior corrosion resistance, such as offshore drilling rigs which are constantly exposed to salt water and spray.

Stainless Steel Cable Ties - Ladder Type, Black Nylon 11 Coating

ITEM NUMBER	LENGTH (L)		MAXIMUM BUNDLE DIAMETER (W)	
	in	mm	in	mm
STLC-195S	8	195	1.7	45
STLC-255S	10	255	2.5	64
STLC-335S	13	335	3.5	89
STLC-490S	19	490	5.4	139
STLC-635S	25	635	7.2	185
STLC-195M	8	195	1.7	45
STLC-255M	10	255	2.5	64
STLC-335M	13	335	3.5	89
STLC-490M	19	490	5.4	139
STLC-635M	25	635	7.2	185

Coated Stainless Steel Cable Ties

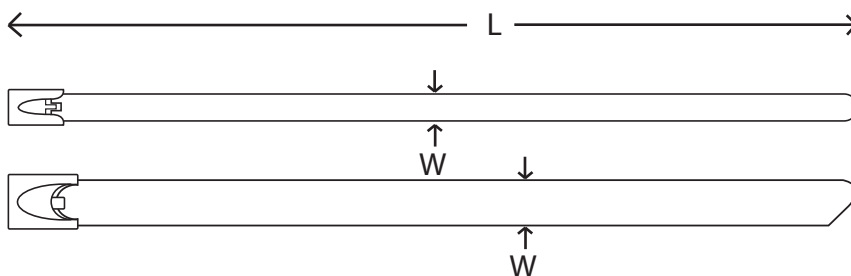
Made from 316 Stainless Steel
 Non-Magnetic.
 W = 0.28" (7 mm)
 T = 0.010" (0.3 mm)
 Tensile Strength S = 75 lbs (34 kg)
 M = 100 lbs (45.3 kg)

Nylon 11 coating reduces corrosion.

Cable Ties

STAINLESS STEEL CABLE TIES

E11



Stainless Steel Cable Ties - With Ball Lock

ITEM NUMBER	LENGTH (L)		MAXIMUM BUNDLE DIAMETER (W)	
	in	mm	in	mm
STB-152S	6	152	1	25
STB-200S	8	200	2	50
STB-360S	14	360	4	102
STB-520S	20	520	6	152
STB-680S	27	680	8	203
STB-840S	33	840	10	254
STB-1050S	41	1050	12.5	318
STB-152M	6	152	1	25
STB-200M	8	200	2	50
STB-360M	14	360	4	102
STB-520M	20	520	6	152
STB-680M	27	680	8	203
STB-840M	33	840	10	254
STB-1050M	41	1050	12.5	318

Stainless Steel Cable Ties With Ball Lock

Made from 316 Stainless Steel
Non-Magnetic.

W = 0.177" (4.5 mm)

T = 0.010" (0.3 mm)

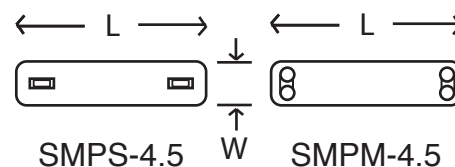
Tensile Strength S = 100 lbs (45.3 kg)

M = 250 lbs (113.3 kg)

Bias tip design on heavier ties speeds installation by allowing smoother entry into the locking head.

Individual locking heads slip onto banding; turn back extended band to hold head in place. Install upside down to disengage ball.

Cable Ties



Steel Tie Marker Plates

ITEM NUMBER	LENGTH	WIDTH
SMPS-4.5	3.5" (88.9)	.375" (9.5)
SMPM-4.5	3.5" (88.9)	.750 (19.0)

For use with Stainless Steel Cable Ties.

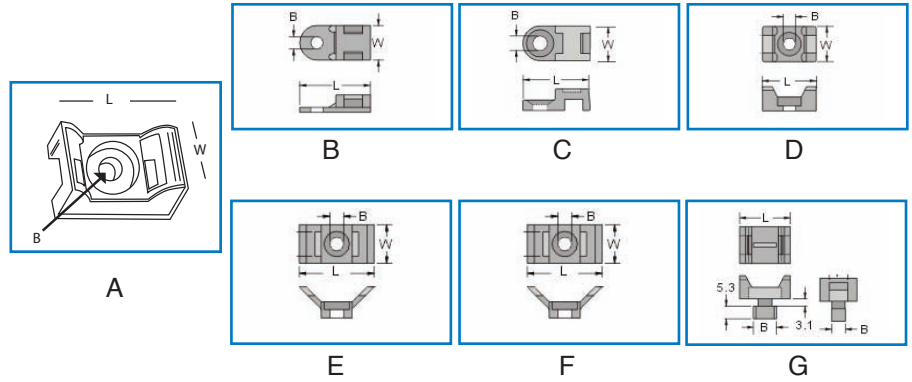
Tag equipment, identify cables or bundles. Marker plates with round holes may be used in various ways.

Made of 316 Stainless Steel.

CABLE TIE MOUNTING HARDWARE

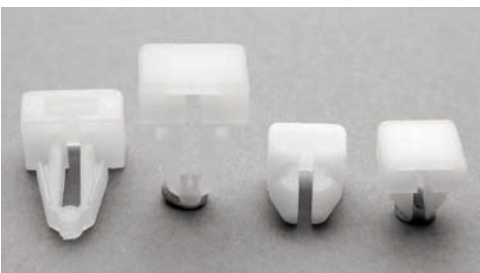
E12

Cradle Mounts



ITEM NUMBER	DIAGRAM	(B)	LENGTH (L)		WIDTH (W)	
			in	mm	in	mm
CM-4	A	0.312"	0.540	13.7	1.340	34.0
CM-8	A	0.375"	0.720	12.3	0.520	13.2
CM-10	A	0.500"	1.040	26.4	0.640	16.3
HC-0	B	0.146"	0.771	19.6	0.374	9.5
HC-0M	B	0.170"	0.748	19.0	0.374	9.5
HC-0L	B	0.217"	0.748	19.0	0.374	9.5
HC-0R	C	0.165"	0.751	19.1	0.393	10.0
HC-1	D	0.138"	0.590	15.0	0.393	10.0
HC-1S	D	0.130"	0.503	12.8	0.275	7.0
HC-2S	D	0.196"	0.905	23.0	0.629	16.0
HC-2	D	0.248"	0.905	23.0	0.629	16.0
HC-2A	D	0.196"	0.807	20.5	0.673	17.1
HC-2L	D	0.255"	0.905	23.0	0.629	16.0
HC-3	E	0.208"	0.905	23.0	0.543	13.8
HC-4	F	0.196"	1.181	30.0	0.578	14.7
HC-5	G	0.228" x 0.381	0.846	21.5	0.629	16.0

Provides stability in wire runs.

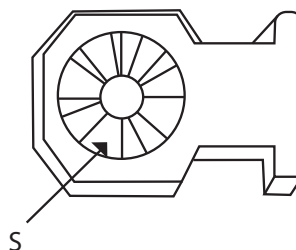
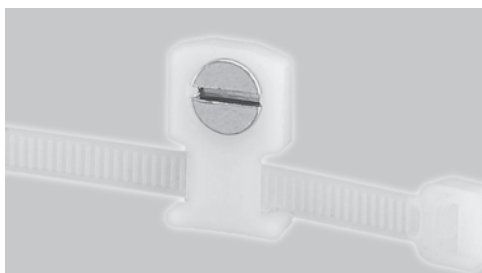


Push Tie Mounts

ITEM NUMBER	FOR CABLE TIES	HOLE SIZE (B)
PIM-187	UP TO 50 LBS	.187
PIM-250	UP TO 120 LBS	.250

CABLE TIE MOUNTING HARDWARE

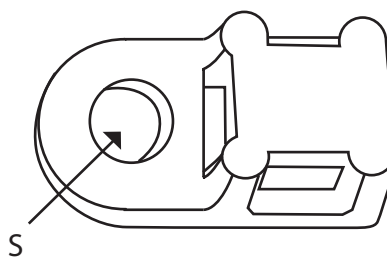
E13



Low Profile Mounts

ITEM NUMBER	FOR CABLE TIES	SCREW SIZE (S)
LPM-8	UP TO 50 LBS	#8

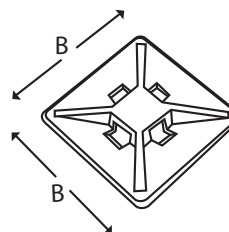
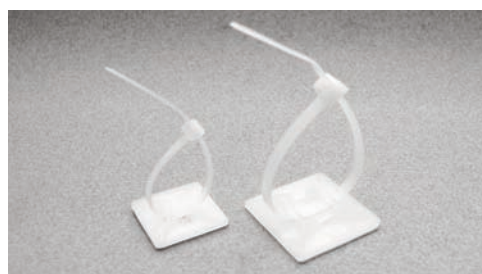
For use where space is limited.



Tie Anchor Bases

ITEM NUMBER	FOR CABLE TIES	SCREW SIZE (S)
TA-8	UP TO 50 LBS	#8
TA-10	UP TO 120 LBS	#10

Secure tie to panel with a single screw.



4-Way Adhesive Backed Mounting Bases

ITEM NUMBER	FOR CABLE TIES	BASE SIZE (B x B)	TYPE
4-SMPA	UP TO 50 LBS	.75" X .75"	ACRYLIC
4-MPA	UP TO 50 LBS	1.0" X 1.0"	ACRYLIC
4-SMPR	UP TO 50 LBS	.75" X .75"	RUBBER
4-MPR	UP TO 50 LBS	1.0" X 1.0"	RUBBER

- $\frac{3}{4}$ " square for 18 through 50 lb ties
- 1" square for 18 through 50 lb ties